



REGIONAL
PUTUMAYO



DEPARTAMENTO DEL PUTUMAYO

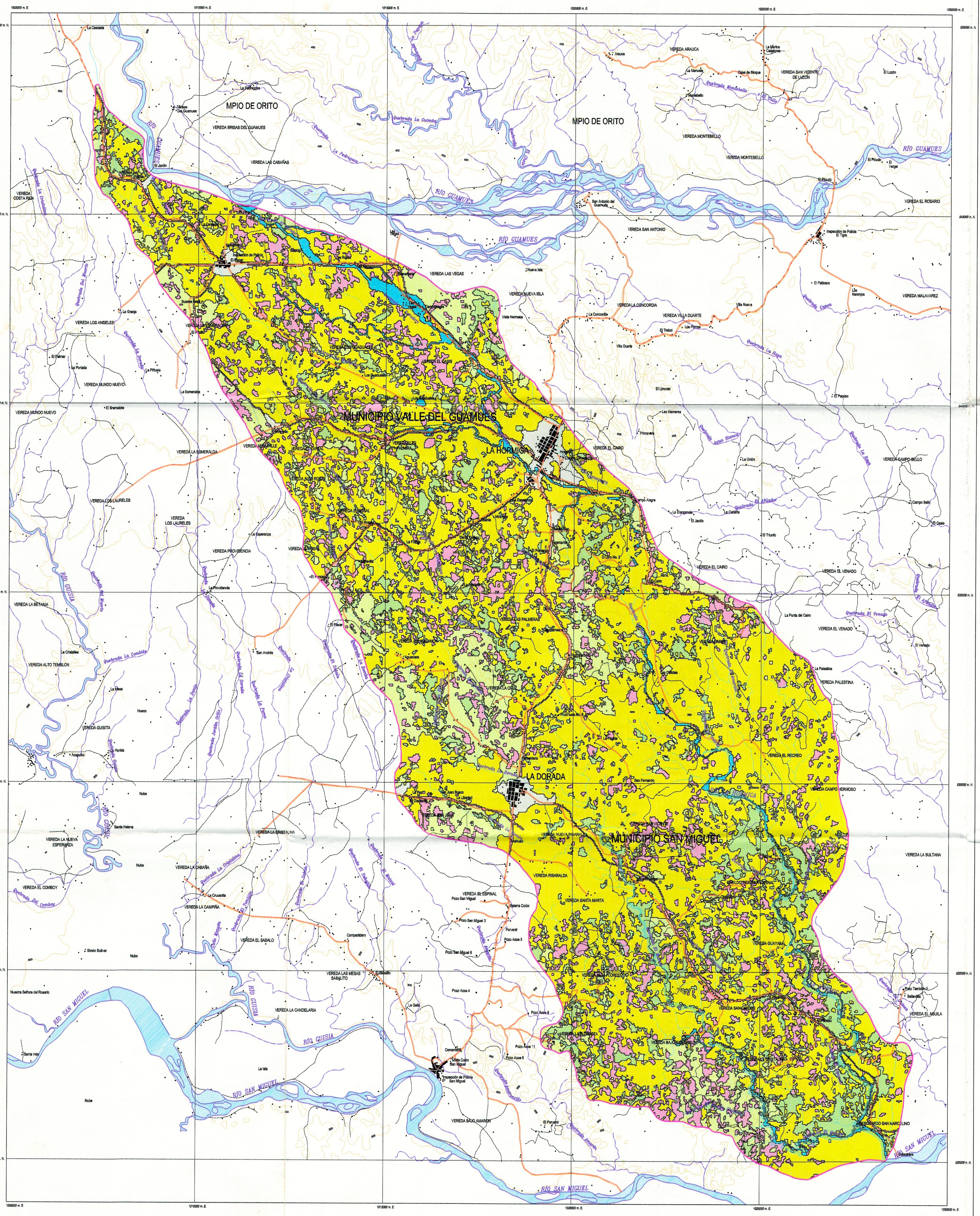
FORMULACION DEL PLAN DE ORDENAMIENTO Y MANEJO
DE LA MICROCUENCA LA HORMIGA, LOCALIZADA EN LOS
MUNICIPIOS DEL VALLE DEL GUAMUEZ Y SAN MIGUEL.

MAPA DE USO ACTUAL DEL SUELO

CARTOGRAFIA Y SISTEMA DE INFORMACION GEOGRAFICO: ING. CIRIO ANGEL PARRADO
MAPA DE USO ACTUAL DEL SUELO: ING. MIRIAM CASTILLO.

LEYENDA

	AREA EN HAS.
	Bosque primario 2195.73
	Bosque Secundario, rastrojo alto 2973.56
	Pastos, rastrojo bajo 14119.69
	Coca en todos sus estados 2672.39
	Cuerpos de agua 348.08
	Cascos urbanos, caserios 326.26
	Vias 280.72
	Nubes o sombras 8.21



CONVENCIONES

CARRERA NACIONAL SIN PAVIMENTAR		CASA, CONSTRUCCION	
CARRERABLE SIN PAVIMENTAR		ESCUELA	
CAMINO PEATONAL		RIO	
SENDERO		QUEBRADA, DRENAJE	
PUENTE		CURVA DE NIVEL INDICE	
SITO, LUGAR		VEREDA	
LIMITE DE LA CUENCA Y DEL ESTUDIO		SECTOR URBANO	

CARTOGRAFIA ELABORADA Y REVISADA CON BASE EN LAS PLANCHAS 1:25000 466-C, 466-D, 466-E, 466-F, 466-G, 466-H, 466-I, 466-J, 466-K, 466-L, 466-M, 466-N, 466-O, 466-P, 466-Q, 466-R, 466-S, 466-T, 466-U, 466-V, 466-W, 466-X, 466-Y, 466-Z, 466-AA, 466-AB, 466-AC, 466-AD, 466-AE, 466-AF, 466-AG, 466-AH, 466-AI, 466-AJ, 466-AK, 466-AL, 466-AM, 466-AN, 466-AO, 466-AP, 466-AQ, 466-AR, 466-AS, 466-AT, 466-AU, 466-AV, 466-AW, 466-AX, 466-AY, 466-AZ, 466-BA, 466-BB, 466-BC, 466-BD, 466-BE, 466-BF, 466-BG, 466-BH, 466-BI, 466-BJ, 466-BK, 466-BL, 466-BM, 466-BN, 466-BO, 466-BP, 466-BQ, 466-BR, 466-BS, 466-BT, 466-BU, 466-BV, 466-BW, 466-BX, 466-By, 466-BZ, 466-CA, 466-CB, 466-CC, 466-CD, 466-CE, 466-CF, 466-CG, 466-CH, 466-CI, 466-CJ, 466-CK, 466-CL, 466-CM, 466-CN, 466-CO, 466-CP, 466-CQ, 466-CR, 466-CS, 466-CT, 466-CU, 466-CV, 466-CW, 466-CX, 466-CY, 466-CZ, 466-DA, 466-DB, 466-DC, 466-DD, 466-DE, 466-DF, 466-DG, 466-DH, 466-DI, 466-DJ, 466-DK, 466-DL, 466-DM, 466-DN, 466-DO, 466-DP, 466-DQ, 466-DR, 466-DS, 466-DT, 466-DU, 466-DV, 466-DW, 466-DX, 466-DY, 466-DZ, 466-EA, 466-EB, 466-EC, 466-ED, 466-EE, 466-EF, 466-EG, 466-EH, 466-EI, 466-EJ, 466-EK, 466-EL, 466-EM, 466-EN, 466-EO, 466-EP, 466-EQ, 466-ER, 466-ES, 466-ET, 466-EU, 466-EV, 466-EW, 466-EX, 466-EY, 466-EZ, 466-FA, 466-FB, 466-FC, 466-FD, 466-FE, 466-FG, 466-FH, 466-FI, 466-FJ, 466-FK, 466-FL, 466-FM, 466-FN, 466-FO, 466-FP, 466-FQ, 466-FR, 466-FS, 466-FT, 466-FU, 466-FV, 466-FW, 466-FX, 466-FY, 466-FZ, 466-GA, 466-GB, 466-GC, 466-GD, 466-GE, 466-GF, 466-GG, 466-GH, 466-GI, 466-GJ, 466-GK, 466-GL, 466-GM, 466-GN, 466-GO, 466-GP, 466-GQ, 466-GR, 466-GS, 466-GT, 466-GU, 466-GV, 466-GW, 466-GX, 466-GY, 466-GZ, 466-HA, 466-HB, 466-HC, 466-HD, 466-HE, 466-HF, 466-HG, 466-HH, 466-HI, 466-HJ, 466-HK, 466-HL, 466-HM, 466-HN, 466-HO, 466-HP, 466-HQ, 466-HR, 466-HS, 466-HT, 466-HU, 466-HV, 466-HW, 466-HX, 466-HY, 466-HZ, 466-IA, 466-IB, 466-IC, 466-ID, 466-IE, 466-IF, 466-IG, 466-IH, 466-II, 466-IJ, 466-IK, 466-IL, 466-IM, 466-IN, 466-IO, 466-IP, 466-IQ, 466-IR, 466-IS, 466-IT, 466-IU, 466-IV, 466-IW, 466-IX, 466-IY, 466-IZ, 466-JA, 466-JB, 466-JC, 466-JD, 466-JE, 466-JF, 466-JG, 466-JH, 466-JI, 466-JJ, 466-JK, 466-JL, 466-JM, 466-JN, 466-JO, 466-JP, 466-JQ, 466-JR, 466-JS, 466-JT, 466-JU, 466-JV, 466-JW, 466-JX, 466-JY, 466-JZ, 466-KA, 466-KB, 466-KC, 466-KD, 466-KE, 466-KF, 466-KG, 466-KH, 466-KI, 466-KJ, 466-KK, 466-KL, 466-KM, 466-KN, 466-KO, 466-KP, 466-KQ, 466-KR, 466-KS, 466-KT, 466-KU, 466-KV, 466-KW, 466-KX, 466-KY, 466-KZ, 466-LA, 466-LB, 466-LC, 466-LD, 466-LE, 466-LF, 466-LG, 466-LH, 466-LI, 466-LJ, 466-LK, 466-LL, 466-LM, 466-LN, 466-LO, 466-LP, 466-LQ, 466-LR, 466-LS, 466-LT, 466-LU, 466-LV, 466-LW, 466-LX, 466-LY, 466-LZ, 466-MA, 466-MB, 466-MC, 466-MD, 466-ME, 466-MF, 466-MG, 466-MH, 466-MI, 466-MJ, 466-MK, 466-ML, 466-MM, 466-MN, 466-MO, 466-MP, 466-MQ, 466-MR, 466-MS, 466-MT, 466-MU, 466-MV, 466-MW, 466-MX, 466-MY, 466-MZ, 466-NA, 466-NB, 466-NC, 466-ND, 466-NE, 466-NF, 466-NG, 466-NH, 466-NI, 466-NJ, 466-NK, 466-NL, 466-NM, 466-NN, 466-NO, 466-NP, 466-NQ, 466-NR, 466-NS, 466-NT, 466-NU, 466-NV, 466-NW, 466-NX, 466-NY, 466-NZ, 466-OA, 466-OB, 466-OC, 466-OD, 466-OE, 466-OF, 466-OG, 466-OH, 466-OI, 466-OJ, 466-OK, 466-OL, 466-OM, 466-ON, 466-OO, 466-OP, 466-OQ, 466-OR, 466-OS, 466-OT, 466-OU, 466-OV, 466-OW, 466-OX, 466-OY, 466-OZ, 466-PA, 466-PB, 466-PC, 466-PD, 466-PE, 466-PF, 466-PG, 466-PH, 466-PI, 466-PJ, 466-PK, 466-PL, 466-PM, 466-PN, 466-PO, 466-PP, 466-PQ, 466-PR, 466-PS, 466-PT, 466-PU, 466-PV, 466-PW, 466-PX, 466-PY, 466-PZ, 466-QA, 466-QB, 466-QC, 466-QD, 466-QE, 466-QF, 466-QG, 466-QH, 466-QI, 466-QJ, 466-QK, 466-QL, 466-QM, 466-QN, 466-QO, 466-QP, 466-QL, 466-QR, 466-QS, 466-QT, 466-QU, 466-QV, 466-QW, 466-QX, 466-QY, 466-QZ, 466-RA, 466-RB, 466-RC, 466-RD, 466-RE, 466-RF, 466-RG, 466-RH, 466-RI, 466-RJ, 466-RK, 466-RL, 466-RM, 466-RN, 466-RO, 466-RP, 466-RQ, 466-RR, 466-RS, 466-RT, 466-RU, 466-RV, 466-RW, 466-RX, 466-RY, 466-RZ, 466-SA, 466-SB, 466-SC, 466-SD, 466-SE, 466-SF, 466-SG, 466-SH, 466-SI, 466-SJ, 466-SK, 466-SL, 466-SM, 466-SN, 466-SO, 466-SP, 466-SQ, 466-SR, 466-SS, 466-ST, 466-SU, 466-SV, 466-SW, 466-SX, 466-SY, 466-SZ, 466-TA, 466-TB, 466-TC, 466-TD, 466-TE, 466-TF, 466-TG, 466-TH, 466-TI, 466-TJ, 466-TK, 466-TL, 466-TM, 466-TN, 466-TO, 466-TP, 466-TQ, 466-TR, 466-TS, 466-TT, 466-TU, 466-TV, 466-TW, 466-TX, 466-TY, 466-TZ, 466-UA, 466-UB, 466-UC, 466-UD, 466-UE, 466-UF, 466-UG, 466-UH, 466-UI, 466-UJ, 466-UK, 466-UL, 466-UM, 466-UN, 466-UO, 466-UP, 466-UQ, 466-UR, 466-US, 466-UT, 466-UY, 466-UZ, 466-VA, 466-VB, 466-VC, 466-VD, 466-VE, 466-VF, 466-VG, 466-VH, 466-VI, 466-VJ, 466-VK, 466-VL, 466-VM, 466-VN, 466-VO, 466-VP, 466-VQ, 466-VR, 466-VS, 466-VT, 466-VU, 466-VV, 466-VW, 466-VX, 466-VY, 466-VZ, 466-WA, 466-WB, 466-WC, 466-WD, 466-WE, 466-WF, 466-WG, 466-WH, 466-WI, 466-WJ, 466-WK, 466-WL, 466-WM, 466-WN, 466-WO, 466-WP, 466-WQ, 466-WR, 466-WS, 466-WT, 466-WU, 466-WV, 466-WW, 466-WX, 466-WY, 466-WZ, 466-XA, 466-XB, 466-XC, 466-XD, 466-XE, 466-XF, 466-XG, 466-XH, 466-XI, 466-XJ, 466-XK, 466-XL, 466-XM, 466-XN, 466-XO, 466-XP, 466-XQ, 466-XR, 466-XS, 466-XT, 466-XU, 466-XV, 466-XW, 466-XX, 466-XY, 466-XZ, 466-YA, 466-YB, 466-YC, 466-YD, 466-YE, 466-YF, 466-YG, 466-YH, 466-YI, 466-YJ, 466-YK, 466-YL, 466-YM, 466-YN, 466-YO, 466-YP, 466-YQ, 466-YR, 466-YS, 466-YT, 466-YU, 466-YV, 466-YW, 466-YY, 466-YZ, 466-ZA, 466-ZB, 466-ZC, 466-ZD, 466-ZE, 466-ZF, 466-ZG, 466-ZH, 466-ZI, 466-ZJ, 466-ZK, 466-ZL, 466-ZM, 466-ZN, 466-ZO, 466-ZP, 466-ZQ, 466-ZR, 466-ZS, 466-ZT, 466-ZU, 466-ZV, 466-ZW, 466-ZX, 466-ZY, 466-ZZ

